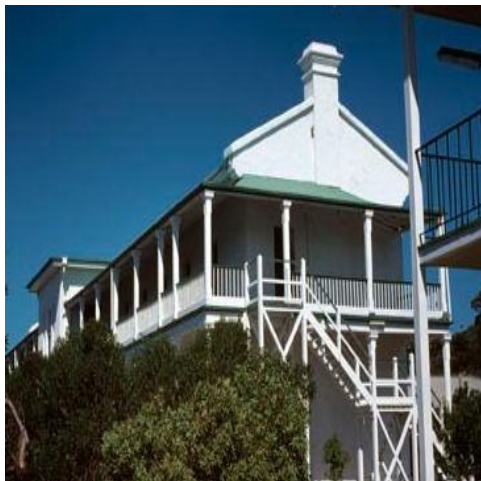


# Point Nepean Fort & Quarantine Station



Closed to the public for over 100 years, Point Nepean National Park is now a popular tourist destination. Besides spectacular ocean scenery, the park is home to Fort Nepean and the historic Quarantine Station.

Fort Nepean contains an extensive system of fortifications built from the 1880's through to the 1st and 2nd World Wars. Fort Nepean was known in the 1880s as Victoria's 'Gibraltar' and in 1890 it was reported that Melbourne was the best defended commercial city of the British Empire.

The Quarantine Station was first established on the shores of Port Phillip Bay in 1852. It was used to protect the colony of Melbourne from ship borne diseases and later become an army base.

You will also enjoy a delicious BBQ style lunch whilst taking in the beauty of Point Nepean National Park. Following your lunch and tours you will board the coach for a relaxing journey home.

**Departs: 8.30am Returns: 5.00pm**

**Includes:**

- ◆ **Luxury Coach Travel**
- ◆ **Morning Tea**
- ◆ **BBQ Style lunch**
- ◆ **Transporter ride around Point Nepean**

**Price per person: \$**

**Based on 40 passengers Prices subject to change**

***Midland Tours***

889 High Street, Reservoir. 3073

Telephone: (03) 9470-3355

Fax: (03) 9471-0728

ABN: 43 582 248 641

Licensed Travel Agent No. 32511

Email: [info@midlandtours.com.au](mailto:info@midlandtours.com.au)

Web: [www.midlandtours.com.au](http://www.midlandtours.com.au)